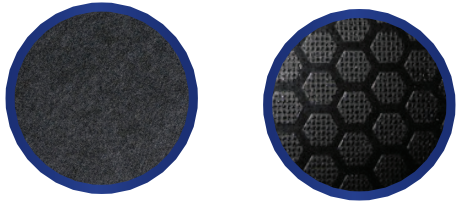
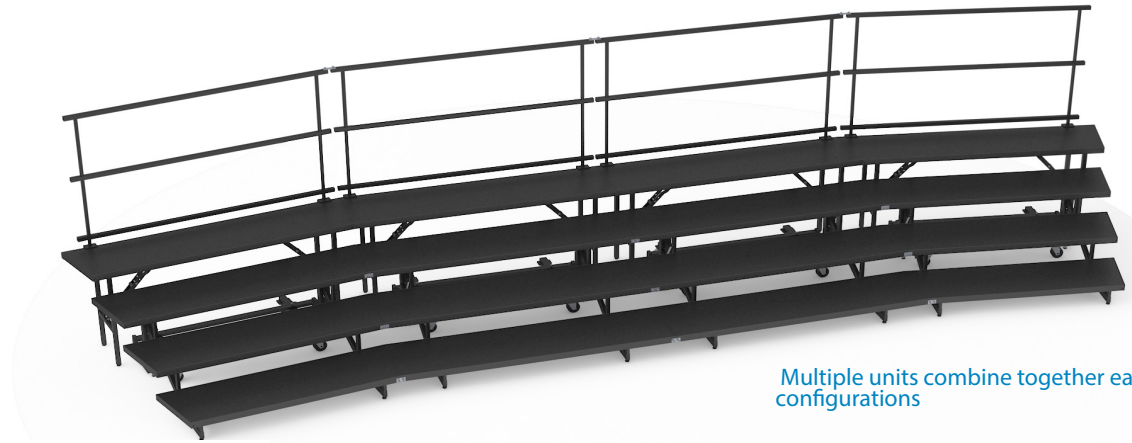


## 3 and 4 Tier Mobile Folding Choral Risers



Available in 2 surfaces, carpet and industrial



Multiple units combine together easily to form various configurations

Available in straight or wedged options



4th tier attaches separately and is not connected to the 3 tier unit



Roll in and Roll Out!  
Easy one person set-up  
& compact storage



Super strong!  
Supports up to 153 lbs  
per square foot



### Staging 101 Mobile, Folding Choral Risers

- 10 year warranty.
- Riser platforms are 72" x 18" (1.8m x .45m) and are available in straight or wedged three-tier or four-tier options. Back guardrails are included.
- Side guardrails are available as an additional option.
- Available in black industrial finish and gray carpet finish.
- Fast, easy "roll in and roll out" mobile folding design. Easy set-up by 1 person.
- Multiple units combine together easily to form various configurations.
- Perfect for schools, churches, hotels, exhibition halls and many other applications.
- For use mostly indoors and should be installed on a flat surface.

**Weight rated at: 750 KG / SQ M (153 LBS /SQ FT).**